

# Eddy County CWMA Resource Providers

Special thanks goes to the following agencies and private companies for their contributions:

- The County of Eddy
- Carlsbad SWCD
- NM Dep't of Transportation (District 2)
- NM Department of Energy
- Eddy County Cooperative Extension Service, NMSU
- USDA Forest Service
- USDI Bureau of Land Management - Carlsbad District
- NM State Forestry Division
- PNM Resources, Inc.
- Dawson Geophysical, Inc.
- Bass Enterprises Production Co.
- Intrepid Mining LLC
- Meybourne Oil Company, Inc.
- Harvard Petroleum Corporation
- Cimarex Energy, Co.
- Marbob Energy Corp.
- EOG Resources, Inc.
- Nadel & Gussman, LLC
- Devon Energy Corp.
- Basic Energy Services, Inc.



Carlsbad Soil and Water Conservation District

3219 S. Canal Carlsbad NM 88720

575-628-1532 phone 575-885-5386 fax

[www.carlsbadsoilandwater.org](http://www.carlsbadsoilandwater.org)

[swcd@carlsbadsoilandwater.org](mailto:swcd@carlsbadsoilandwater.org)

## Targeted Species of Control Efforts

At present, three species are being targeted by the Eddy County CWMA. They are African Rue, Malta Star-thistle, and Russian knapweed.



African Rue Near Willow Lake

African Rue - (Peganum harmala) is a drought hardy, summer growing, succulent herb with an aggressive woody root system. This plant

originated in the deserts of North Africa and Asia. The plant grows approximately 1.5 feet high with leaves that are alternate, smooth and divided in linear segments. The flowers have five petals and grow singly in the leaf forks of the stem.



Malta Star-thistle in Rosette Stage

Malta Star-thistle - (Centaurea melitensis) grows in disturbed areas such as road sides and open fields as well as in rangelands, pastures and in crop fields. It has

stiff, wiry stems, grows 1 to 3 feet tall, green to blue-green leaves that are covered with fine

hairs. The flowers are yellow and grow at the end of the stems, either in groups of 2 - 3 or singly. This plant reproduces from seeds.

Russian Knapweed - (Acroptilon repens L.) is a creeping perennial weed that spreads mostly by root buds but also by seed with growth characteristics similar to Canada thistle. Russian knapweed can be distinguished from other knapweeds by the pointed papery tips of the floral bracts. It also has dark brown or black, scaly roots that can reach depths over 20 feet. The plant can reach 4 feet high and has flowers that range in color from light pink to lavender. The lower leaves ranges from entire to lobed and upper leaves are small entire and directly attached to the stems.



Russian Knapweed Flower Closeup

The lower leaves ranges from entire to lobed and upper leaves are small entire and directly attached to the stems.



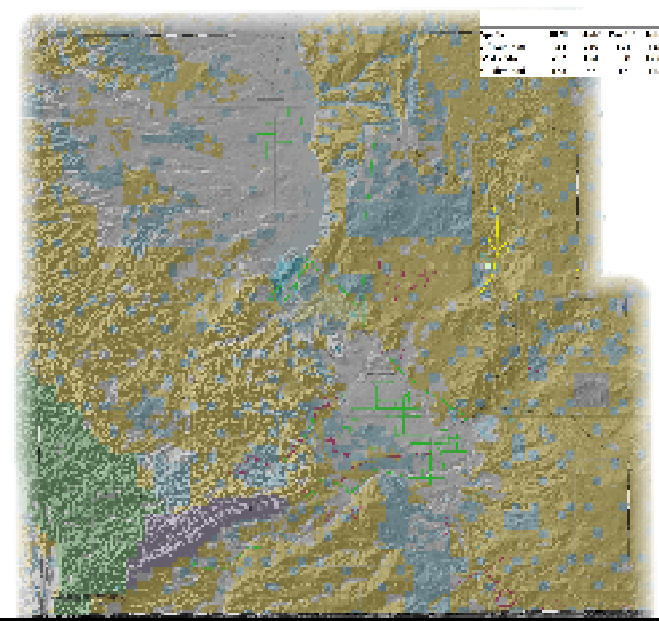
NM Dep't of Transportation treating noxious weed in a right-of-way

Eddy County

# Coordinated Weed Management Area



A coordinated effort to control Noxious Weeds in Eddy County.



Example of map of treated areas generated by Carlsbad BLM Field Office.

### HOW THE EDDY COUNTY COORDINATED WEED MANAGEMENT AREA WORKS

The Eddy County Coordinated Weed Management Area (CWMA) depends on the collaboration of its members. Carlsbad Soil and Water Conservation District (SWCD) administers the projects for the group, develops quarterly reports, as well as receives and distributes funds for chemicals, labor, equipment, etc. Our partners, Bureau of Land Management (BLM), Eddy County, and others treat the noxious weeds.

Eight Thales MobileMapper CE GPS/GIS receivers are programmed for the individuals to mark locations where treatment has been performed and document new locations of infestation for future treatment.

- \* The Eddy County Road Department maintains 1,281 miles of road outside the city limits of Artesia and Carlsbad.
- \* The New Mexico Department of Transportation is responsible for maintaining the state highways within the county.
- \* National and State parks maintain their locations with some assistance from the Bureau of Land Management-Carlsbad Field Office (BLM-CFO).
- \* Coordination for the treatment of other roads, oil and gas locations, state trust lands, federal property, and private property, is done through the BLM-CFO and Carlsbad SWCD.
- \* Maps of treated areas and species treated as well as areas of future treatment are generated by BLM. Updated maps are provided at the quarterly weed management meetings to keep all parties informed as to the areas of treatment.
- \* Quarterly meetings are held for each agency representative to discuss the status of current/planned applications and funding.
- \* Funding for the Eddy County CWMA is provided through many sources. County, District, and Federal agencies have allocated reoccurring funds for the project. Private oil and gas production and exploration companies have contributed funds toward treatment as well. Additional funding sources, such as grants are also used to purchase chemical.

## Eddy County Coordinated Weed Management Area Memorandum of Understanding Signatories

The County of Eddy  
 The City of Carlsbad  
 The City of Artesia  
 Carlsbad Irrigation District  
 Carlsbad SWCD  
 Central Valley SWCD  
 Penasco SWCD  
 Native Plant Society  
 Carlsbad Chapter  
 NM Dep't of Transportation (District 2)  
 NM Dep't of Game and Fish  
 NM Dep't of Energy, Minerals and Natural Resources  
 NM State Land Office  
 Eddy County Cooperative Extension Service, NMSU  
 USDA Natural Resources Conservation Service  
 Carlsbad  
 Caverns National Park  
 Guadalupe Mountains National Park  
 Sureste RC&D Council  
 US Dep't of Energy  
 Carlsbad  
 USDA Forest Service, Guadalupe Ranger District  
 USDI Bureau of Land Management Carlsbad District



## What is a Coordinated Weed Management Area (CWMA)?

A CWMA is a group of individuals, agencies, and organizations interested in the prevention of noxious weeds in a given area. The Eddy County CWMA was originally formed in November 1997. The Eddy County CWMA consists of 2,875,200 acres in Eddy County, New Mexico.

Eddy County CWMA operates under the authority of the Federal Noxious Weed Act of 1974 (P.L. 93-629) (7 U.S.C. 2801 et seq.) as amended by the Food, Agriculture, Conservation and Trade Act of 1990, Section 1453 ("Section 15, Management of Undesirable Plants on Public Lands") and the State of New Mexico " Harmful Plant Act " 78-7A-11; "Noxious Weed Act" 78-7-1 through 78-7-22, 1978; "Harmful Weed Act" 78-7-23 through 78-7-30, New Mexico Statutes Annotated (NMSA) 1978 compilation.

The purpose stated in the Memorandum of Understanding (MOU), signed by all the members of the Eddy County CWMA, is to coordinate the management of noxious plants on public and private lands in Eddy County, New Mexico; to coordinate, encourage and formalize the cooperative relationship necessary for the effective management of noxious plants including implementation of an Integrated Pest Management System.

The intent of the program is to prevent introduction, control the spread of, and eradicate noxious plants through the coordinated efforts in Eddy County. Noxious plants are defined as exotic or alien plants that interfere with the management objectives for a given area of land at a given point in time.



Treatment of salt cedar by Eddy County CWMA.